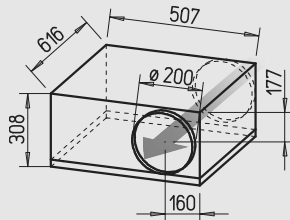


SilentBox® SB



Virtually noise-free with high air flow volumes against high resistances. Ideal for maintenance and cleaning.



Dim. in mm

■ Similarities SB and SVS

□ Installation

Installation in any position without restriction – horizontally, vertically or pitched – suitable for intake or extract (Exception: SVS must not be installed with the swing-out motor-impeller unit facing upward).

□ Motor

Totally enclosed external rotor motor with ball bearings, impregnated windings insulation class F, designed for continuous operation, maintenance free and interference-free.

■ Specification SilentBox®

□ Casing

Like an internal attenuator. Acoustically lined with abrasive resistant 50 mm thick mineral fibreboard. Four quick release clamps permit easy access to motor scroll and impeller set. Swing out motor and impeller.

Spigots on intake and exhaust twin-seal rubber gaskets fit standard ducts. All parts manufactured from galvanised sheet steel.

□ Impeller

With backward curved high-quality polymer blades. Inflow via inlet cone.

□ Electrical connection

Terminal box (IP 54) is supplied with a 60 cm long electric cable.

□ Motor protection

With thermal contacts wired in series with the windings. To reset the thermal contacts the main supply must be switched off and on.

□ Speed control

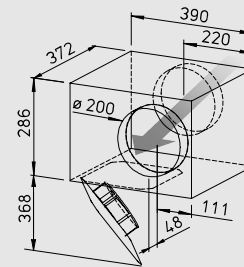
Stepless 0 – 100 % using electronic controller or 5 step transformer controller (see table).

□ Protection class
IP 44

SlimVent SVS



Ultra low profile. Ideal for applications with limited installation space. With sound-insulating mineral wool lining for particularly noise-free operation.



Dim. in mm

■ Specification SlimVent SVS

□ Casing

Extremely flat casing in longer design with more than 50 mm thick sound-absorbing mineral wool lining and glass fibre surface. The acoustic box which is placed in front of the fan reduces the sound level for the intake significantly. The sound pressure level is reduced to a smaller extent (see sound levels in the tables above the performance curves).

□ The swing out motor and impeller unit permits maintenance and cleaning without disassembly of system components. The swing-out range must be considered for the inspection flap.

□ Impeller

Energy-saving centrifugal impeller with backward curved blades from high quality polymer. Dynamically balanced for low noise operation.

□ Electrical connection

Terminal box (IP 54) mounted on running cable.

□ Motor protection

With thermal contacts wired in series with the windings which automatically reset after cooling.

□ Speed control

Stepless 0 – 100 % by use of electronic controller or 5 step transformer controller (see table).

□ Protection class

When installed in ducting the fan is rated IP 44.

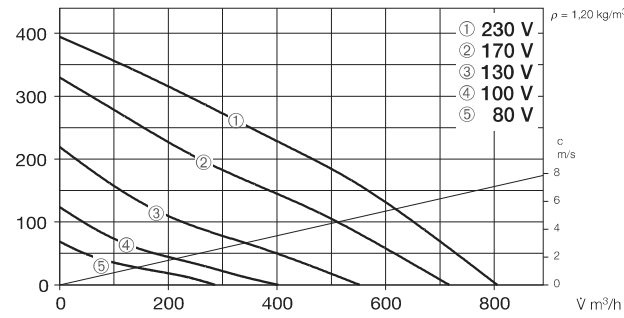
Information	Page
Techn. description	296
Selection chart	297
Information for planning	10 on
Modular system	294

Type	Ref. no.	Air flow volume (FID)	R.P.M.	Sound press. case breakout	Motor power	Current full load	Current control	Wiring diagram	max. air flow temp. full load	max. air flow temp. control	Weight net approx.	Transformer-speed controller 5-step	Electronic* speed controller, stepless flush / surface
		∇ m ³ /h	min ⁻¹	db(A) in 1 m	W	A	A	No.	+°C	+°C	kg	Type Ref. no.	Type Ref. no.
Type SilentBox® SB, 1 ph. motor, 230 V, 50 Hz, capacitor motor, IP 33													
SB 200 C	9510	810	2520	44	105	0.46	0.46	508	70	70	19.0	TSW 1,5 1495	ESU 1 / ESA 1 0236 / 0238
SB 200 D	9564	1030	2700	48	160	0.69	0.83	508	70	50	19.7	TSW 1,5 1495	ESU 1 / ESA 1 0236 / 0238
Type SVS, 1 ph. motor, 230 V, 50 Hz, capacitor motor, IP 33													
SVS 200 K	0132	940	2710	55	163	0.71	0.83	508	70	50	9.2	TSW 1,5 1495	ESU 1 / ESA 1 0236 / 0238

* In noise relevant cases, transformer controllers must be provided. An electronic controller can trigger a distracting magnetisation noise.

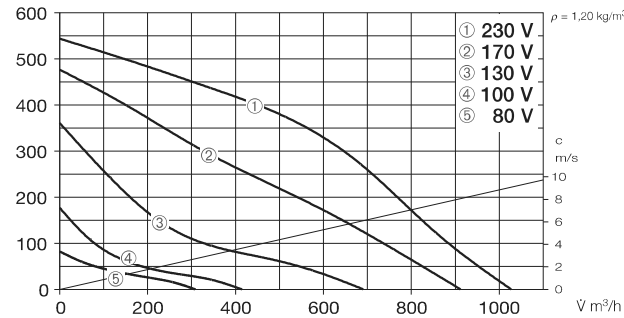
SB 200 C

Frequency	Hz	Total	125	250	500	1k	2k	4k	8k
L _{WA} Case breakout	dB(A)	51	37	51	40	36	36	29	28
L _{WA} Intake	dB(A)	62	58	58	49	42	41	38	33
L _{WA} Exhaust	dB(A)	69	59	65	61	57	60	56	49



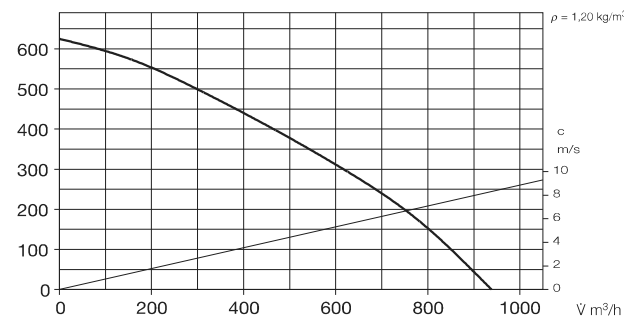
SB 200 D

Frequency	Hz	Total	125	250	500	1k	2k	4k	8k
L _{WA} Case breakout	dB(A)	55	42	53	48	40	37	32	29
L _{WA} Intake	dB(A)	65	60	62	57	48	41	40	39
L _{WA} Exhaust	dB(A)	73	62	68	66	63	62	58	60



SVS 200 K

Frequency	Hz	Total	125	250	500	1k	2k	4k	8k
L _{WA} Case breakout	dB(A)	63	45	55	61	50	45	38	35
L _{WA} Intake	dB(A)	71	65	67	61	54	49	49	46
L _{WA} Exhaust	dB(A)	81	67	74	78	72	70	66	61



Sound levels

Total sound power levels and the spectrum figures in dB(A) are given for

- Sound level case breakout
- Sound level intake/exhaust

The type table also shows

- Sound pressure case breakout and intake air noise specified as sound pressure in 1 m (free field conditions).

For the SB types, it should be noted that the intake sound level is less than the exhaust sound level.

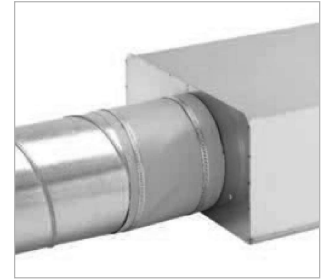
Accessory details Page

Filters, heater batteries and attenuators	421 on
Temperature control systems for heater batteries	427, 431 on
Flexible ventilation ducting, Grilles, adaptors, roof terminations	487 on
Valves	508 on
Speed controllers, switches	525 on

Accessories

Flexible sleeve

Type FM 200 Ref. no. 1670
Supplied with two hose clips as standard; for installation between fan and duct system. Prevents sound and vibration transmission to ducting and corrects small site misalignments. For intake or extract two sleeves are needed for complete isolation.



Gravity shutter

Type VK 200 Ref. no. 0758
Automatic made from polymer, light grey.



Fixed grille

Type RAG 200 Ref. no. 0750
For covering air inlets and outlets on facades. Made from polymer, light grey.



Guard

Type SGR 200 Ref. no. 5066
For intake and extract installation. Made from galvanised steel.



Backdraught shutter

Type RSK 200 Ref. no. 5074
Automatic, made from metal.



Flexible circular attenuator

Type FSD 200 Ref. no. 0679
Spigotted aluminium attenuator with 50 mm insulation. Length 1 m.



Air filter box

LFBR 200 G4 Ref. no. 8579
LFBR 200 F7 Ref. no. 8533
Air filter with large surface area for installation in ducting.



Electric heater battery

EHR-R 1,2/200 1,2 kW No. 9436
EHR-R 2/200 2,0 kW No. 9437
EHR-R 5/200 5,0 kW No. 8711
– with integrated temp. control
EHR-R 5/200 TR 5,0 kW No. 5295
Room or duct sensor (TFK/TFR, accessories) required.



Temperature control system for electric heater battery EHR-R
Type EHS Ref. no. 5002

Warm water heater battery

Type WHR 200 Ref. no. 9482
Compact heat exchanger for in-line installation.



Temperature control system for warm water heater battery
Type WHST 300 T38 No. 8817

